



District Councillors Report to Little Bealings Annual Parish Meeting

For March 2023

Carlford and Fynn Valley Ward.

Rushmere Village, Great Bealings, Little Bealings, Playford, Bredfield, Grundisburgh & Culpho, Witnesham and Swilland, Westerfield, Hasketon, Clopton, Charsfield, Dallinghoo, Tuddenham, Boulge, Burgh, Debach, Otley.

**From District Councillor
Cllr Colin Hedgley**

This past year has been one of recovery from the pandemic then to be faced by a 'cost of living crises'.

As in most situations such as these two, the government of the day makes money available from the exchequer but it's the local councils that have to deliver it. For instance East Suffolk Council had to deal with the distribution of £350 million pounds in help for businesses during the pandemic, a huge headache for the financial team at ESC.

Since the cost- of- living crises, we have received over 500 referrals for financial assistance and set up, with volunteers, 50 warm rooms. Other help is of course available. The demand continues.

Of course, the one thing that affects all parishes equally is planning. Planning law is, to say the least, complicated and it often appears stacked against the ordinary person. Each application must be considered and if necessary, fought against on its merits or otherwise. My biggest gripe is that I do not believe that Parish Councils opinions are given enough weight in planning applications. But for them to have more say would take government legislation, although having a Neighbourhood Plan does help. I for one would like to see the end of Duplicate Applications by, usually, large scale housing firms. Although it saves time and money for the planners it is almost impossible for the Parish Councils to oppose an application with any chance of success.

I will give way to my friend Mr Thornborrow who will be making a report on Sinks Pit.

Council Tax

As most of you are aware the government instructed local Councils not to raise Council Tax by more than 5%. ESC have set ours at 2.8% for 2023/24. I have no responsibility for the County Council or the Police and Crime Commissioner who I know is struggling with ever increasing demands and costs.



East Suffolk Council approves a budget of over £30million to fund essential services in 2023/24.

The spending plan, to help improve the lives of residents over the coming financial year, was agreed by councillors at a meeting of the full council on Wednesday 22 February. Additionally, in the five years up to and including 2026/27, a forecast £410m will go towards major projects as part of the council's overall General Fund Capital Programme, and an additional £83m on housing development and new build schemes, and maintenance of the existing housing stock. Over £287m has been raised from external grants and contributions towards the cost of our General Fund capital project programme. This includes a £24.9m Towns Fund grant to regenerate Lowestoft, driving economic growth and acting as a catalyst for future investment, and rising to a potential £35.9m with the addition of matched funding, while UK Shared Prosperity and Rural England Prosperity Fund grants will support local business, people and skills throughout the district.

A General Fund Revenue Budget of £30.1m for 2023/24 includes £16.37million in Council Tax, which makes up just over 50% of the money we receive. However, the portion of Council Tax which East Suffolk receives (around 10% of the total bill) will only increase by 2.81%, or £4.95 for the entire year on the annual bill of a Band D property. The remaining 90% goes to Suffolk County Council, the Police & Crime Commissioner, and Town/Parish councils.

May 2023 elections: Photographic voter ID easy read guides

As part of its public awareness campaign, the Electoral Commission has published new [easy-read and plain text format resources about](#) (control and Click) the new voter identification requirements.

These resources set out the new requirements to provide photographic voter identification at this year's local elections and how voters can apply for a voter authority certificate if they do not have approved identification. If you use a Driving Licence for instance and it is quite old, so long as the photo is a reasonable likeness then it will be accepted.

Ease the Squeeze on cost of living

If you, or someone you know, is worried about the increasing cost of living the help is at hand. We understand the pressures faced by many people today and we are working closely with key partners to ensure support is available to help ease the squeeze for households in East Suffolk. To make it as easy as possible for you to access the services and support available, locally and nationally, we have gathered information about them in one place.

[Head to our Ease the Squeeze page now](#) (control and click)



**EASE THE
SQUEEZE**



Imported food products surrendered following vehicle spot check

Food inspectors from East Suffolk Council helped intercept a quantity of suspected illegally imported meat following a vehicle stop in Lowestoft. The discovery was made during a multi-agency spot check of vehicles, in Lowestoft, on Friday 3 February. East Suffolk Council's Food and Safety team investigated the contents of the vehicle following a request for assistance from Suffolk County Council Trading Standards colleagues. The van was found to contain mainly pork, eggs and other food, which the occupants of the vehicle claimed was for personal consumption. It was also found to contain weighing scales and a refrigerator.



Just42
making a positive impact

www.just42.org.uk

We are a local charity with 10 years experience of mentoring young people with our Compass mentoring program

**DO YOU HAVE A
HEART FOR
YOUNG PEOPLE**

Do you have an hour
or so each week for a
period of time

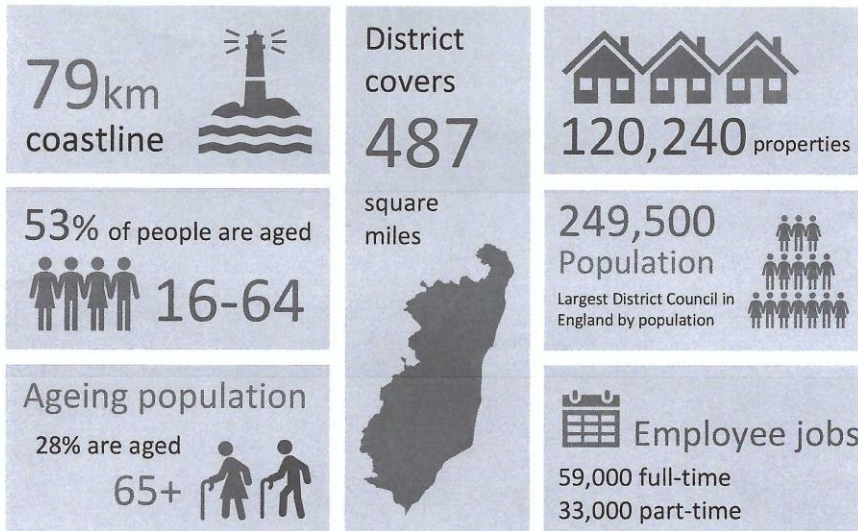
Scan the QR code or
contact us

E: info@just42.org.uk
T: 01394 380992

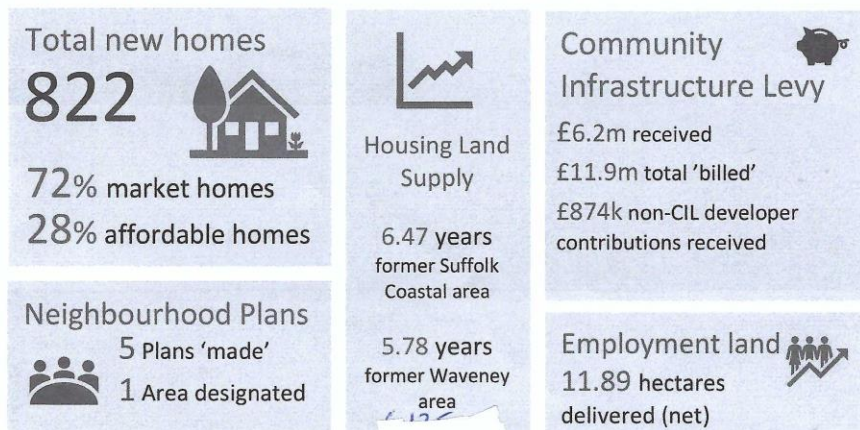


SCAN ME

About East Suffolk



Key statistics 2021/22





Planning, Little Bealings.

Unfortunately, I could not attend the Planning Meeting last Tuesday. The application for Woodside, Martlesham Road, was discussed and approved. Had I been there I would have put the PC case forward quite strongly but it was not to be. The point I make earlier in this report is illustrated in this instance very clearly.