



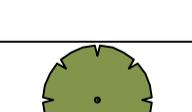


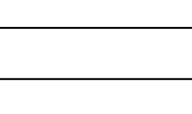
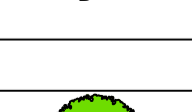
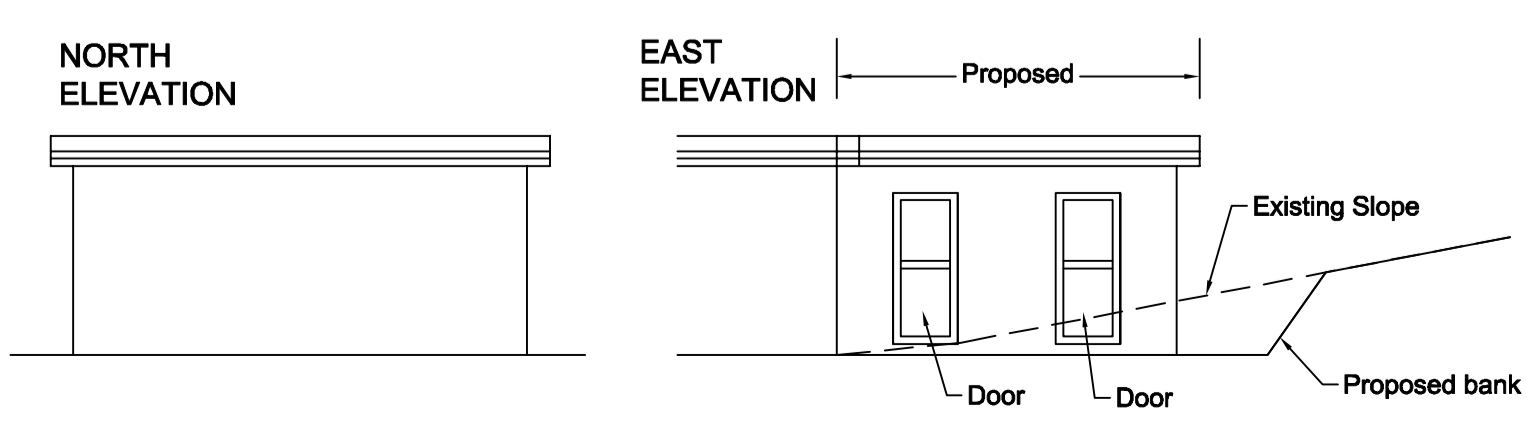
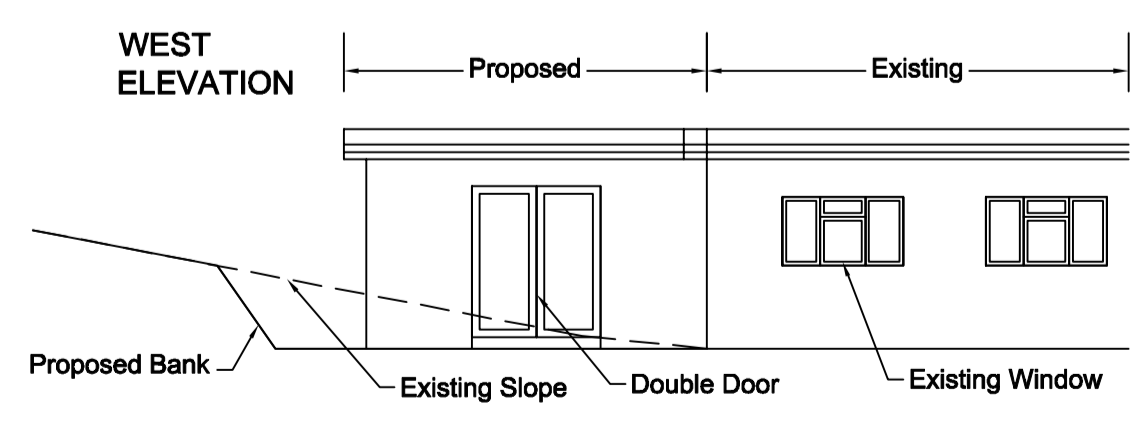
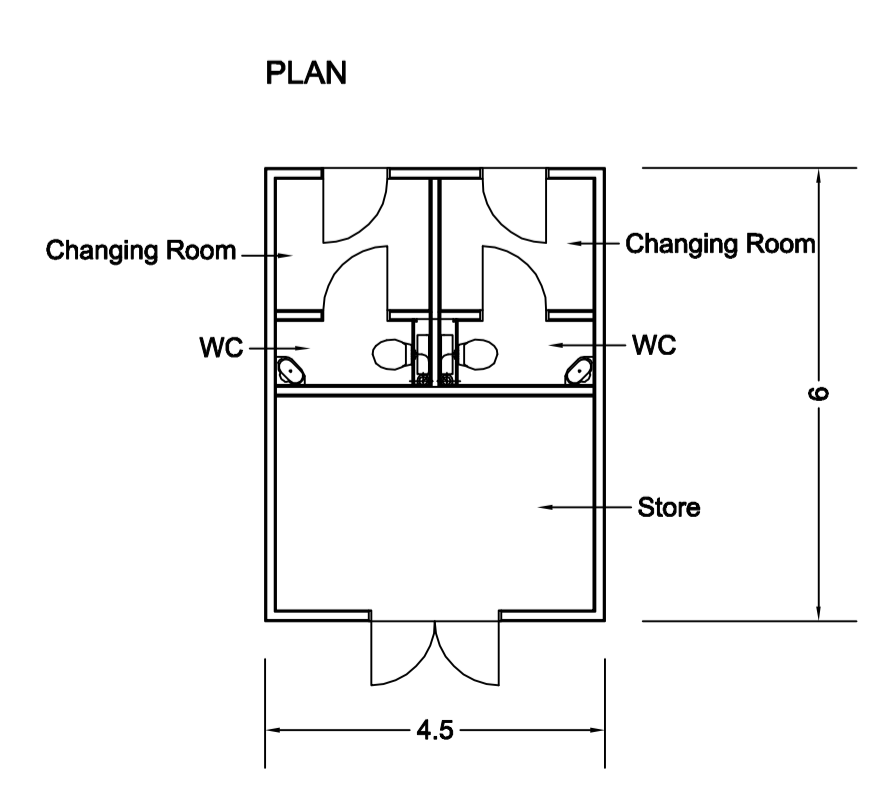


KEY:

-  Mown Grass Areas
-  Area managed as wildlife habitat - predominantly meadow & woodland understorey
-  Vegetation To Be Removed
-  Scrub To Be Retained
-  Tree To Be Retained
-  Bitumen Macadam & Hoggin Surfaces
-  Bench on paved pad
-  B: Litter Bin
D: Dog Bin
-  Proposed native trees.

- Play Equipment Schedule:**
- P1) Eibe 5550855 basis aerial cableway atlas30m
 - P2) Eibe 5598090 minimondo little beetle spring rocker
 - P3) Eibe 5671250 basis snake spring rocker
 - P4) Eibe 5588060 double bay swing
 - P5) Proludic J831 Gyrospiral
 - P6) Kompan Gxy 8014 Spica
 - P7) Kompan Gxy 8015 Spica
 - P8) Huck Art. 20.01.020 Space Capsule
 - P9) Timberline Package B Woodlander duo.

PROPOSED EXTENSION TO VILLAGE HALL TO ACCOMMODATE STORE, WC AND CHANGING AREAS
ALL MATERIALS AND FINISHES TO MATCH EXISTING BUILDING
1:100 SCALE



- Revisions :**
- A - 19.05.06 Drawing finalised
 - B - 30.06.06 References to lighting & BBQ omitted
 - C - 04.09.06 Play equipment changed, path layout altered, toddlers play area changed
 - D - 02.04.07 Details added for clearance of planning conditions and tendering
 - E - 22.04.08 Drawing amended to show 'as built' layout
 - F - 06.12.08 Additional as built info

 **Land & Sculpture Design Partnership**
 CHARTERED LANDSCAPE ARCHITECTS - SITE SPECIFIC SCULPTORS

SITE : Bealings Playingfield
DRG : Landscape Master Plan
DRN BY : GH
SCALE : 1:250
DATE : March 2006
No : LSDP 10339.01 Rev F