

@one

love every drop
anglianwater

Little Bealings



first time sewerage scheme



Why are we completing the scheme?

@one

love every drop
anglianwater 

We are investing over £1 million to provide properties in Little Bealings with a mains sewerage system.

An application was made in 2009 on behalf of seven properties, this was initially rejected as the cost to provide sewerage services would have been more than private options.

A subsequent application was made by Little Bealings Parish Council in 2014 and was also initially rejected for the same reason.

A dispute was raised and the Environment Agency (EA) investigated whether sewerage services should be provided to 39 premises. The EA determined that Anglian Water had to accept a duty to provide sewerage services to five properties.

Who are the duty properties?

@one

love every drop
anglianwater

The EA concluded that there were five properties where the most appropriate and practical solution to alleviate the adverse environmental and amenity effects is the provision of a new public sewer.

These five properties are called 'duty properties', this means that we now have a legal duty to provide these properties with a connection to mains sewerage.



Our construction plan

As part of the scheme, we'll install 745metres of gravity sewers. Wastewater from properties will naturally flow down this pipe to the new pumping station.

Once flows reach the pumping station, they will be pumped up 490metres of new pumped sewer pipe, back into the existing network.



Site compound area

We will construct a temporary site compound area before the project begins.

The site compound area will be the base for our offices, welfare and storage of materials.



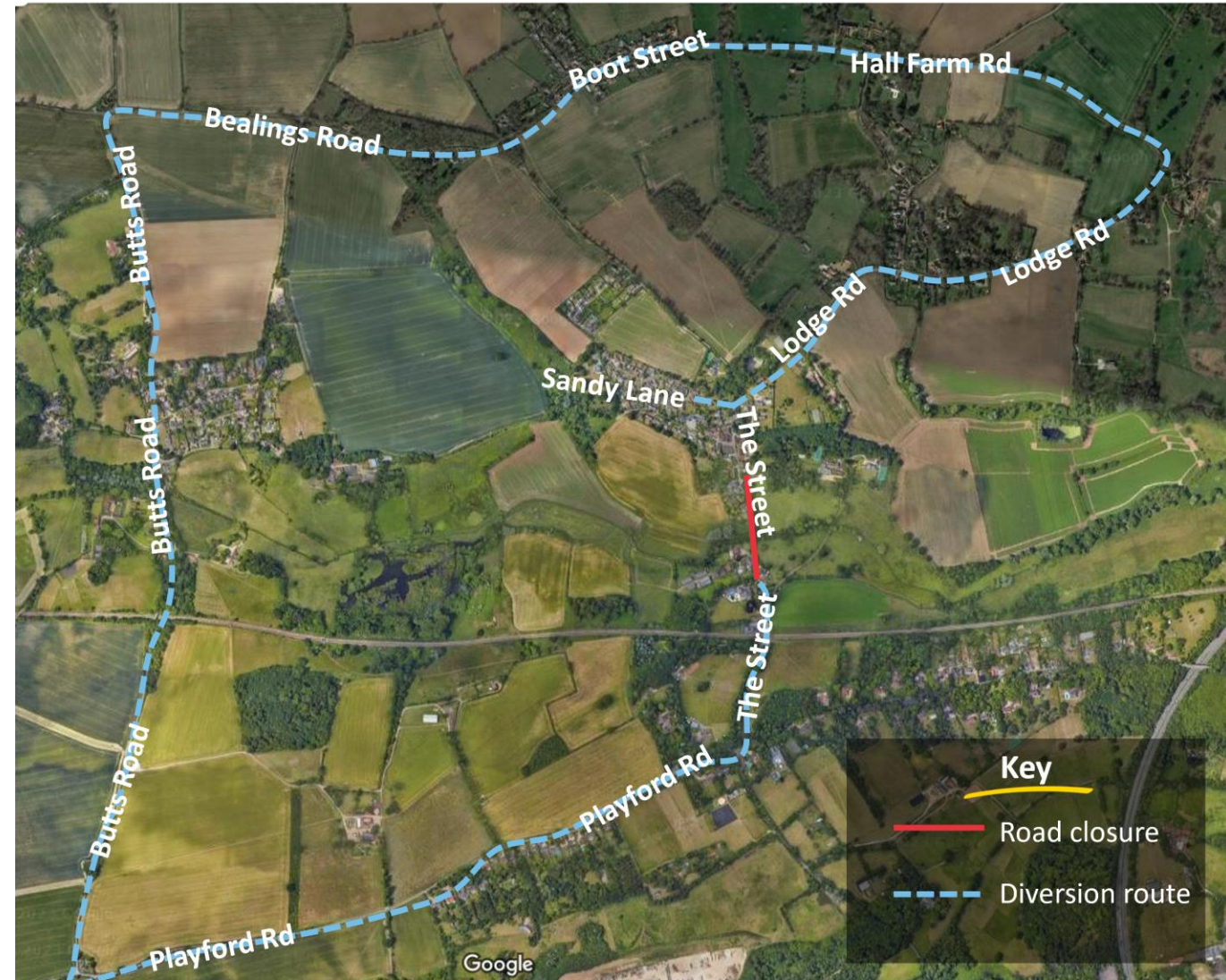
Key

-  Pumped sewer
-  Gravity sewer
-  Pumping station
-  Site compound area

Traffic management and timescales

We expect the scheme to last for approximately ten months and we currently plan to start work early 2024.

To ensure the safety of our workforce and the public, we will have a road closure on The Street for around five months.



New pumping station



Will it smell?

No, It will not emit much odour, as we be installing a new chemical dosing station which will stop sewerage going septic.

Will the pumps make noise?

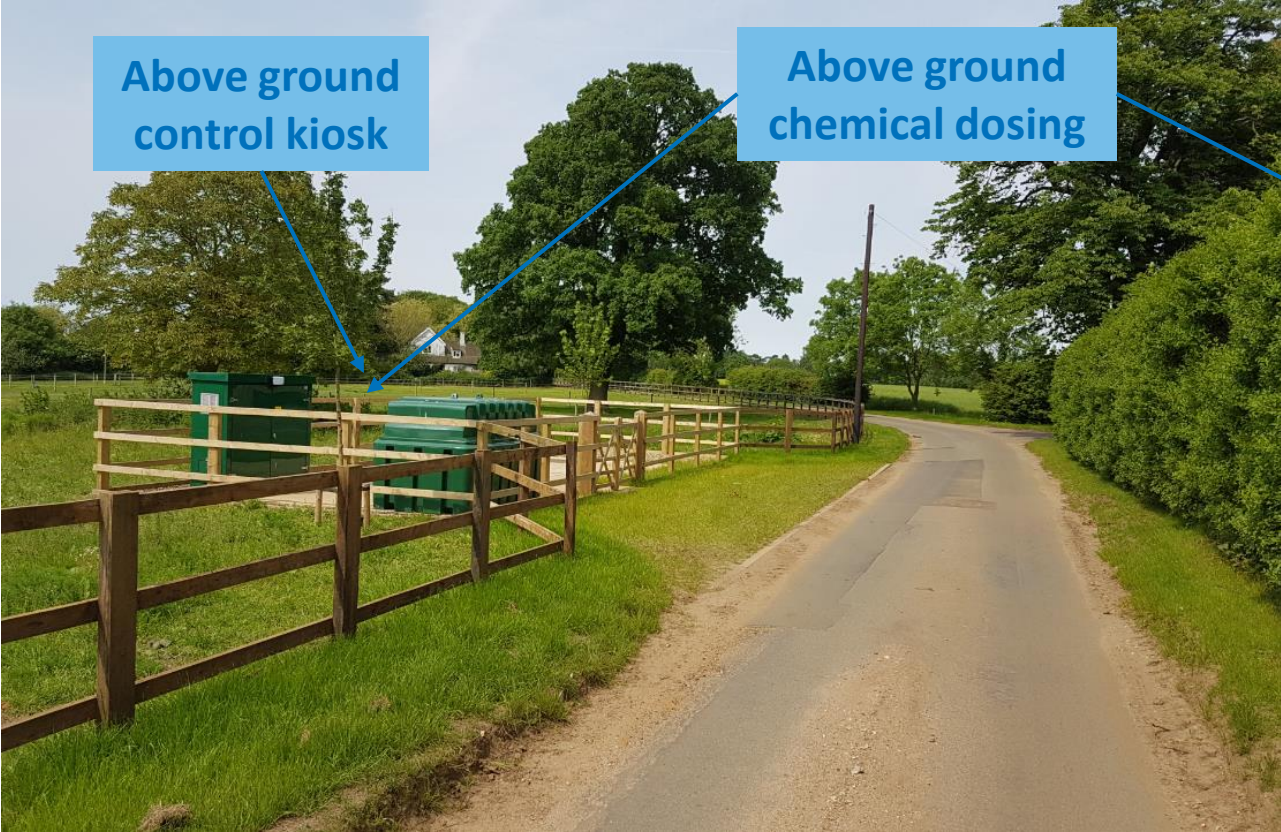
We do not anticipate for there to be much noise from the station due to the pumps being around four metres underground.

How often will we visit once it's built?

You can expect us to visit once a month to ensure everything is working as it should. This will be a small van.

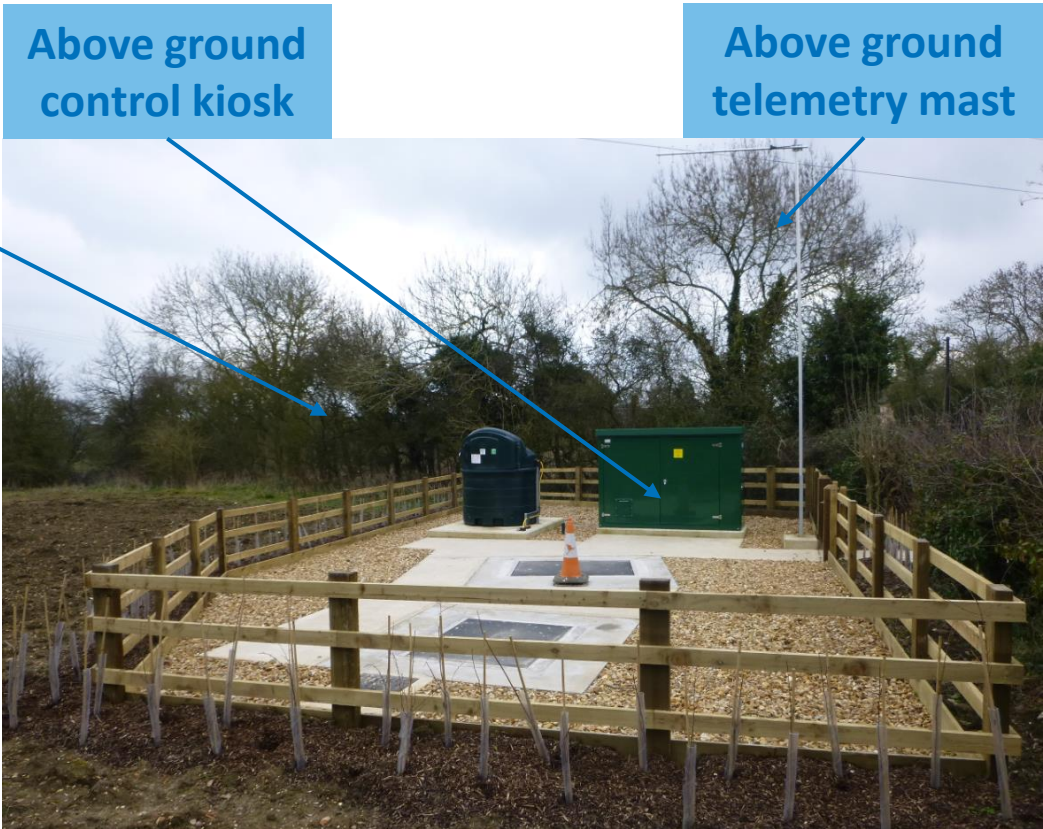
What will it look like?

We've included some examples below.



Above ground control kiosk

Above ground chemical dosing



Above ground control kiosk

Above ground telemetry mast

Reinstatement

All areas will be reinstated to at least the existing standard. Please bear in mind the time of the year may cause delays with reinstating.

Due to narrow roads around the village, the verges will become disturbed during our work. Once we've finished in an area they will be reinstated using top soil and seed. We will then install flag markers to prevent other vehicles driving over them.

@one

love every drop
anglianwater



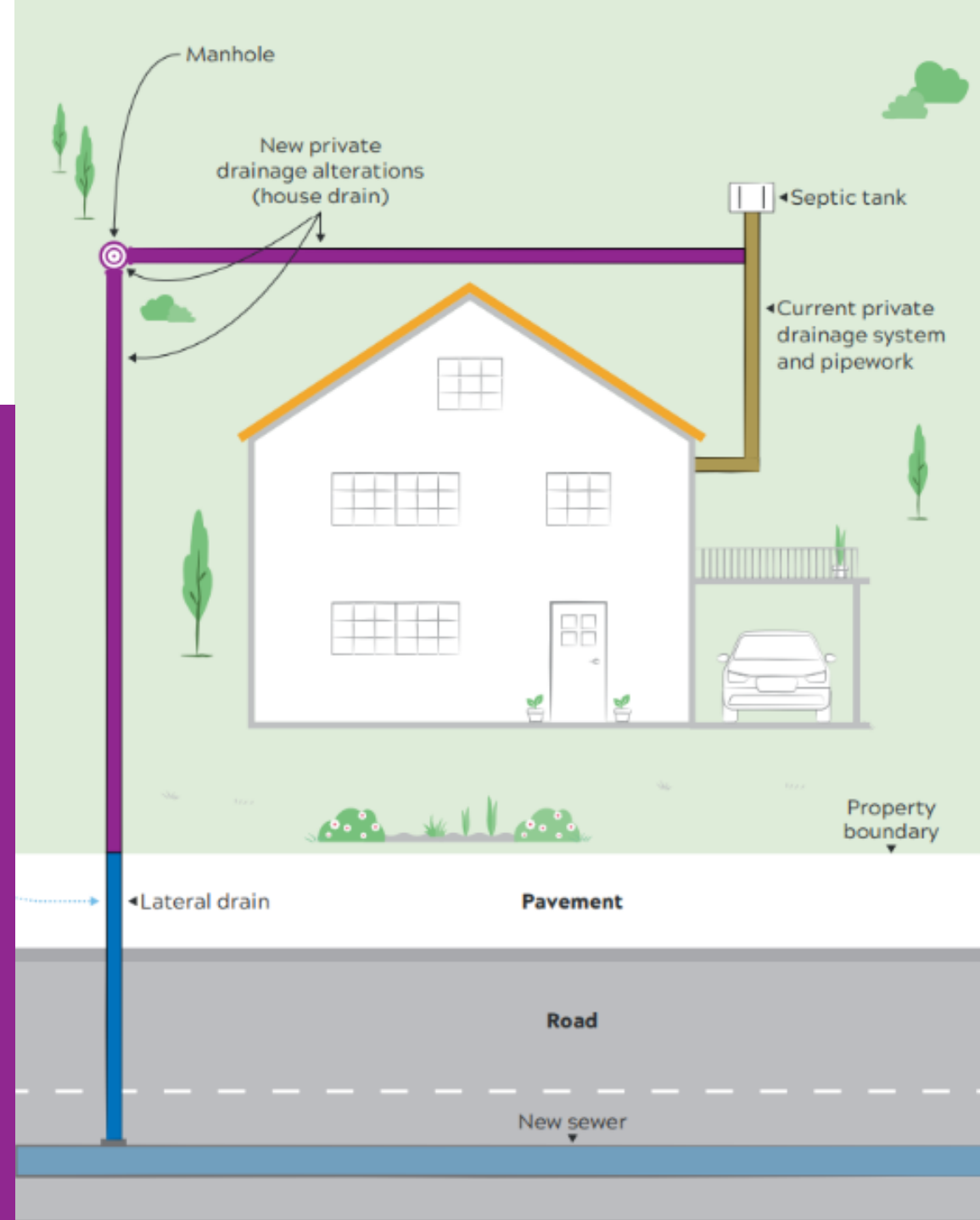
Connect to the new sewer as part of the scheme and you'll get...

- ✔ **Free lateral drain** from the edge of your property boundary to the new sewer.
- ✔ **No fee** on our usual one-off infrastructure and application charge.
- ✔ **First 12 months sewerage charges for free***

If I take up this offer, what will I pay for?

You'll be responsible for paying and arranging the following:

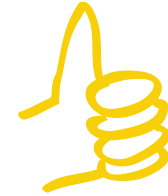
- 1 The cost of separating your surface water from your foul water** (if necessary).
- 2 The costs involved in connecting your property to the new sewer.** Including laying your new house drain from your existing drainage system to the lateral drain that will be left at the property boundary. For this work you would normally employ a local builder.
- 3 Making an application to the building control section of your local council for a Building Control Inspection.** They will normally charge a fee. You will do this after the project is complete and after your contractor has made alterations to your private drainage and connected to the lateral drain. The Building Control Inspection will be of the connection to the lateral drain.



@one

love every drop
anglianwater 

Thank you for listening



Do you have any questions?